

S-7250A *DigiFlex Feed*

Single Needle Direct Drive Lock Stitcher
with Electronic Feeding System and Thread Trimmer

Best Productivity is DigiFlex Feed

Equipped the innovative DigiFlexFeed System for high productivity
Simple and easy-to-use standard lock stitch machine with selected functions

- Reduces needle breakage, puckering and materials slippage with DFF
- Elimination of oil stains due to the adaption of the sealed type oil pan.
- Productivity improvement management utilizing IoT



NEXIO





Best Productivity is DigiFlex Feed

DigiFlex Feed

Direct Electronic Feed Control

DigiFlex Feed, which is world's first equipped on S-7300A and highly evaluated in the market, digitalizes feeding system and resolves various sewing troubles without adjustment work.

- Improvement in the reduction of needle breakage and productivity.
- Simple select and smooth sewing without material slippage.
- Excellent sewing quality that's easy to get proper thread tension in accordance with several materials

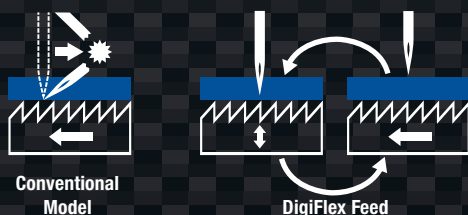
	Feed motion image	Main features
Standard Oval feed		Reduced material slippage
DigiFlex Feed No.1 Front rise feed		Improved thread tightening
DigiFlex Feed No.2 Back rise feed		Reduced puckering
DigiFlex Feed No.3 Rectangular feed		Less needle breakages



Needle Breakage Prevention with Brother Own 3 Functions

1 Optimization of fabric feed timing by changing feed motion of DFF

Fabric can be feed at an appropriate timing so that needle won't break even during thick material sewing.



2 Change from mechanical control to stepping motor control by equipped DFF

Compared to conventional mechanical control, the stepping motor control makes the response of reverse sewing quicker and reduces needle breakage.

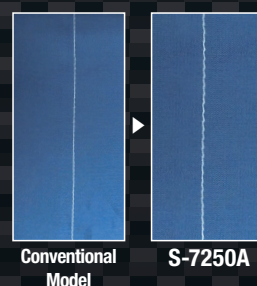
3 Equipped with needle prevent breakage function while reverse sewing

Sensing needle position and controlling proper feed timing that prevent from unreasonable reverse sewing as needle breaks automatically.

A Variety of Functions Realize Ease of Use and Ideal Sewing

4 Beautiful stitching without puckering

DFF realizes appropriate thread tightening in relation with the fabric and reduces puckering.



5 Short remaining thread, (3mm) doesn't require after-cutting process

The new double action thread trimming mechanism cut's the thread right under the needle hole, realizing the short remaining thread at minimum of 3mm. The disposition of thread ends after sewing can be reduced thanks to the new system. (Premier Spec.)



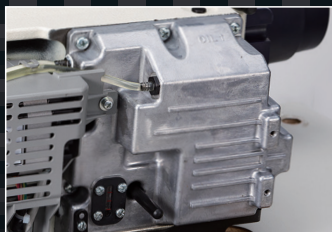


Quality

Productivity Improvement by Improving Production Management with IoT

6 Oil staining prevention

The closed oil tank enables clean sewing more than conventional model's that does stain sewing material. The minimum lubrication system prevents problems such as oil leakage and oil scattering drastically.



7 Easy operation with a simple panel

You can change the stitch length and sewing speed easily. In addition, it is possible to set the stitch length as a numerical value, and the reproducibility of sewing is improved.



8 Stress relief at reverse sewing

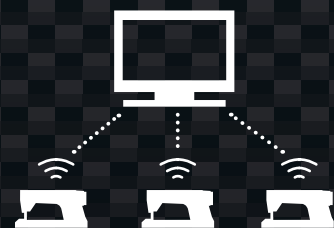
Because the reverse sewing is changed to motor control, vibration and noise are suppressed. It contributes a stress relief.

9 Reduction of hanging fabric

By arranging rubber on the back side which had been installed at the four corners of the bed of the sewing machine on the surface, it becomes easier to handle the fabric.

10 Productivity improvement with IoT

NEXIO series are IoT applicable models. The visualization by connecting sewing machine and computer technology enables the customer to analyze, manage processes and speed up productivity improvement and maintenance work.



11 Easy and secure data management with USB

Data transfer to other sewing machines and software upgrade can be done with USB memory easily.

S-7250A-70 ■

S-7250A-70 ■ P

With thread holder,
with extra hand switch

Application
3 For medium-weight materials
5 For heavy-weight materials

Specification
P Premier Specification

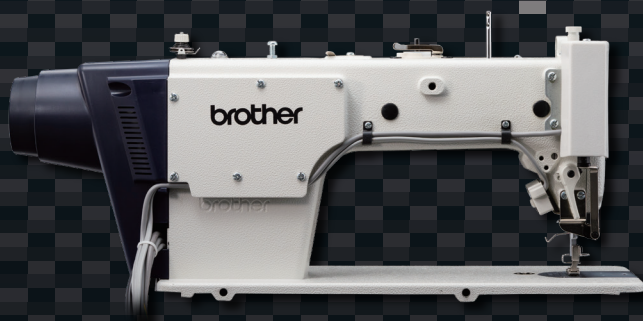
S-7250A	-703	-705	-703P	-705P
Lubrication type	Minimum lubrication		Minimum lubrication	
Application	Medium materials	Heavy materials	Medium materials	Heavy materials
Max. sewing speed	5000sti/min*1	4000sti/min	5000sti/min*1	4000sti/min
Max. back tacking speed	3000sti/min		3000sti/min	
Max. stitch length	5mm	Max. 7mm (default setting: 5mm)	5mm	Max. 7mm (default setting: 5mm)
Thread trimming mechanism	Single action trimming mechanism (Ordinary type)		Double action trimming mechanism	
Presser foot height	Presser bar lifter: 6mm Knee lifter: 13mm		Presser bar lifter: 6mm Knee lifter: 13mm	
Needle bar stroke	31mm	35mm	31mm	35mm
Needle (DBX1-DPX5)	#11-#18 (Nm75-110)	#19-#22 (Nm120-140)	#11-#18 (Nm75-110)	#19-#22 (Nm120-140)
Height of feed dog	0.8mm	1.2mm	0.8mm	1.2mm
Thread holder, with extra hand switch	✓		✓	
Weight	35kg		35kg	
Motor	AC servo motor		AC servo motor	
Power	100-110V(*2), 200V-230V, 380V-400V(*2) under 450VA		100-110V(*2), 200V-230V, 380V-400V(*2) under 450VA	

*1 Stitch length 2.0mm and under

*2 The transformer is required.

Optional parts* / Hand switch<SB7924001>

* Hand switch by 703 / 705 included



**RoHS
Compliant**

S-7250A is compliant with the RoHS Directive (the restriction of the use of certain hazardous substances in electrical and electronic equipment) which came into effect in the EU in July 2006.



Brother has established voluntary environmental standards for products and created the "Brother Green Label". S-7250A is certified as an environment-conscious sewing machine according to the "Brother Green Label" standard.



Brother
Earth

Please read instruction manual before using the machine for safety operation.

-Product specifications are subject to change for improvement without notice.

-Photographs are for illustration purpose. They may not represent actual operating conditions and may display optional parts.

Working with you for a better environment
www.brotherearth.com

CHINA
ASIA
EUROPE AFRICA, MIDDLE EAST
AMERICAS

BROTHER MACHINERY SHANGHAI LTD.
BROTHER MACHINERY (ASIA) LTD.
BROTHER INTERNATIONALE INDUSTRIEMASCHINEN GmbH
BROTHER INTERNATIONAL CORPORATION

www.brother.cn/
www.brother.com.hk/
www.brother-industrial.com
www.brother-usa.com/
+86-21-3135-3355
+852-2777-0010
+49-2822-6090
+1-908-704-1700

brother

BROTHER INDUSTRIES, LTD.

1-5, Kitajizoyama, Noda-cho, Kariya-shi, Aichi 448-0803, Japan.
Phone: 81-566-95-0088 Fax: 81-566-25-3721 <http://www.brother.com/>

2017.7 I7071148Z Vol.1