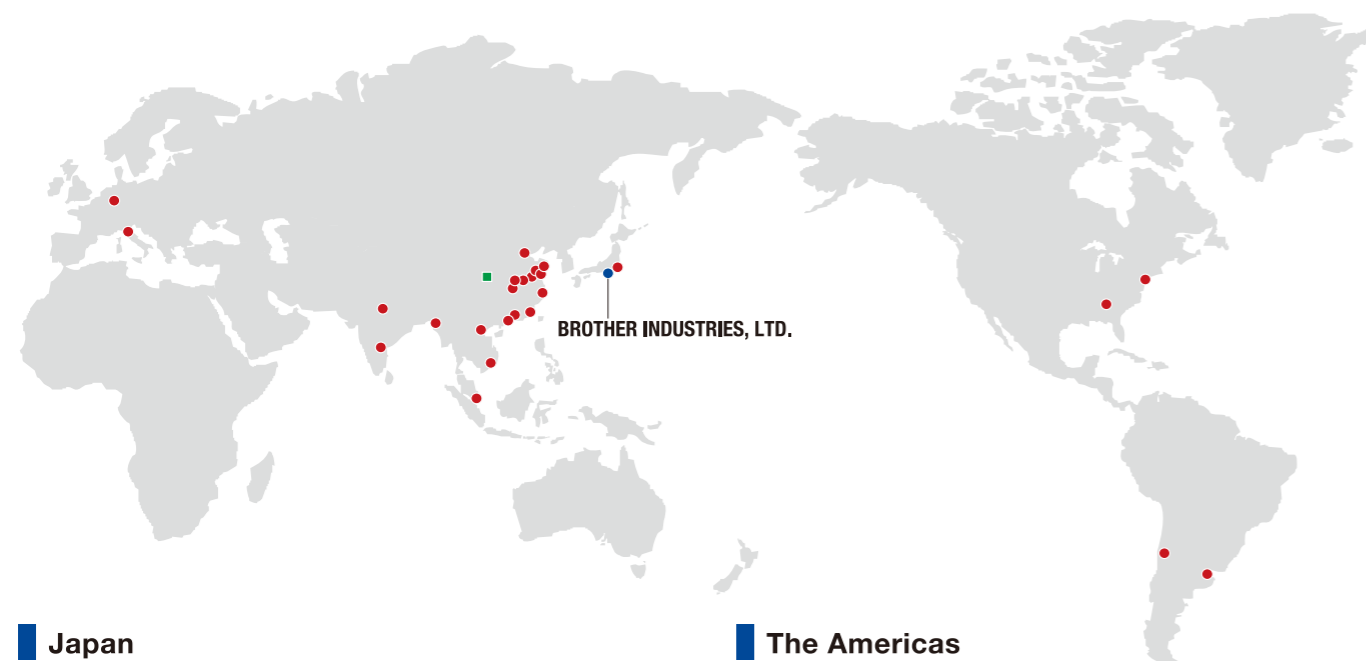


INDUSTRIAL SEWING MACHINES BUSINESS GLOBAL NETWORK

Brother offers products and services that meet the needs of customers
all over the world through our global network



Japan

Group Headquarters
BROTHER INDUSTRIES, LTD.

Asia/Oceania

Manufacturing Facilities
BROTHER MACHINERY XIAN CO., LTD.

Sales/Service Facilities
BROTHER MACHINERY SHANGHAI LTD.
(Shanghai, Beijing, Qingdao, Hangzhou, Ningbo, Changzhou,
Dongguan, Fujian, Wuhan, Hefei, Zhengzhou)

BROTHER MACHINERY (ASIA) LIMITED
(Hong Kong SAR, China)

BROTHER INTERNATIONAL (VIETNAM) CO., LTD.
(Ho Chi Minh, Hanoi)

BROTHER INTERNATIONAL SINGAPORE PTE LTD.
(Singapore)

BROTHER INTERNATIONAL (INDIA) PVT. LTD.
(Delhi, Bangalore)

BROTHER INTERNATIONAL SINGAPORE PTE LTD.
DHAKA LIAISON OFFICE
(DHAKA)

The Americas

Sales/Service Facilities
BROTHER INTERNATIONAL CORPORATION
(New Jersey, Tennessee)

BROTHER INTERNATIONAL DE CHILE LTDA.
BROTHER INTERNATIONAL CORPORATION ARGENTINA S.R.L.

Europe/Middle East/Africa

Sales/Service Facilities
BROTHER INTERNATIONALE INDUSTRIEMASCHINEN G.m.b.H.
BROTHER INTERNATIONALE INDUSTRIEMASCHINEN G.m.b.H. (Italian Branch)

INDUSTRIAL SEWING MACHINES

General Catalog of Industrial Sewing Machines

11.2024 vol.6

Brother GT/ISM Support App



Please read instruction manual before using the machine for safety operation.

-Product specifications are subject to change for improvement without notice.

-Photographs are for illustration purpose. They may not represent actual operating conditions and may display optional parts.



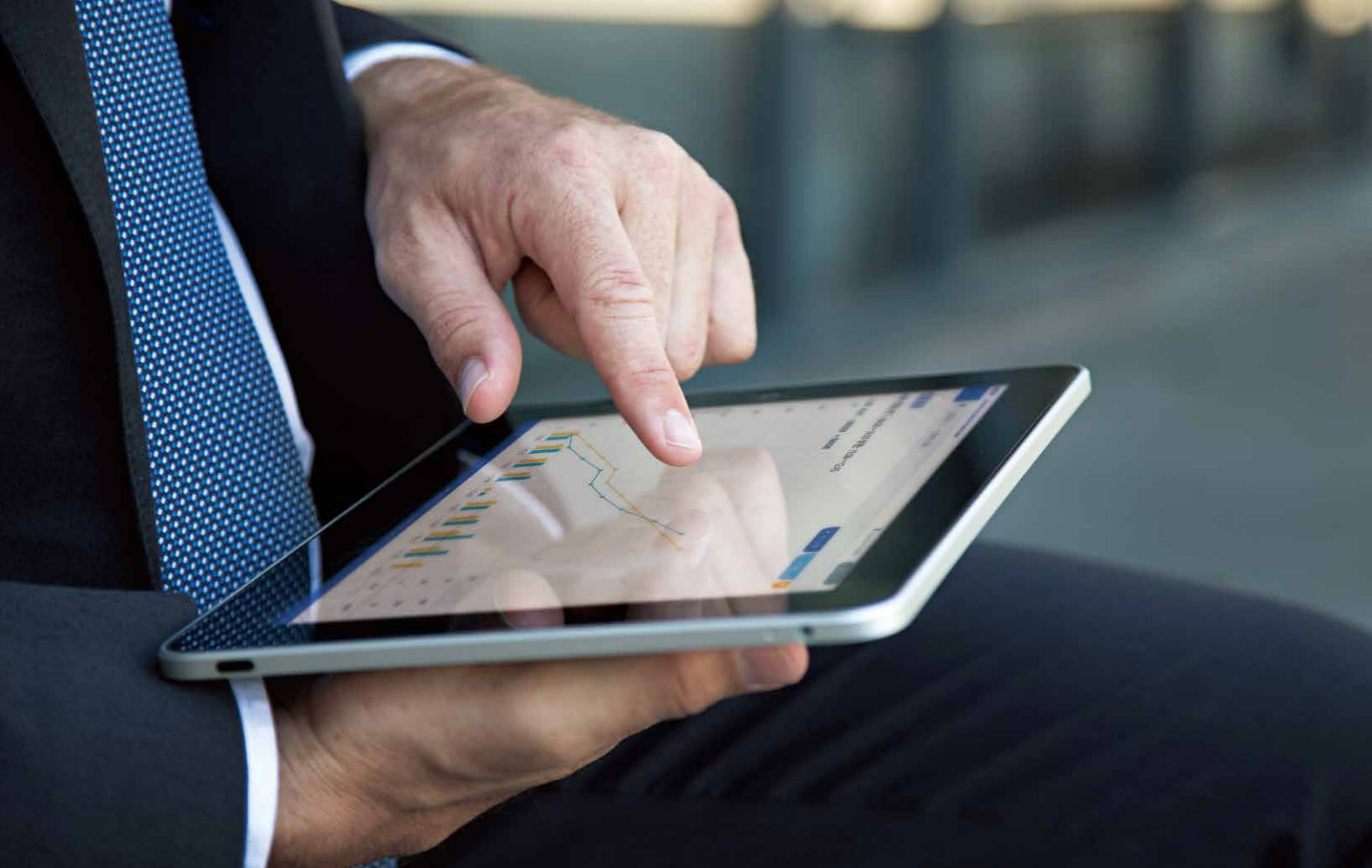
Working with you for a better environment
www.brotherearth.com

CHINA	BROTHER MACHINERY SHANGHAI LTD.	https://www.brother.cn/	+86-21-3135-3355
ASIA	BROTHER MACHINERY (ASIA) LTD.	https://ism.global.brother/en-ap/	+852-2777-0010
EUROPE AFRICA, MIDDLE EAST	BROTHER INTERNATIONALE INDUSTRIEMASCHINEN GmbH	https://ism.global.brother/en-emea/	+49-2822-6090
AMERICAS	BROTHER INTERNATIONAL CORPORATION	https://www.brother-usa.com/	+1-908-704-1700



Driving innovations, stitch by stitch.

We make our products more user-friendly and precise to explore new possibilities in manufacturing. We listen to our customers' needs to deliver effective solutions, combining the sewing expertise and digital technology developed throughout our history.



NEXIO SYSTEM



Brother Industrial Sewing Machine Network System

Viewer function

Data can be viewed in a default format in real-time.



Reduces the lead time and realizes real-time data collection. No need for manual production management on a whiteboard by displaying the progress with a large display.



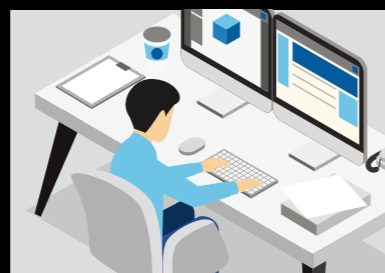
Even from outside your factory, access to your production or line data in real-time, anytime, anywhere.

Data linking function

In addition to the functions of Basic Plan, data can be export in any format, reducing the current manual report work.



Digitalizes complicated work such as data collection, transcription and reporting, and reduces workload.



Eliminates human error and creates more accurate reports.

Utilize REAL-TIME data on multiple purposes

Data will be utilized according to the usage and completely change the factory management.

S-7300A Lock Stitch Sewing Machine



	Direct Drive	Feed	Stitch	Thread trimmer	Material thickness sensor	Lubrication type	Max. sewing speed	Max. stitch length	Needle breakage prevention function	Application
S-7300A	○	DigiFlex Feed	Lock stitch	○	—	Minimum/ Semi dry	5,000sti/min 4,500sti/min	5mm/ 7mm	○	Medium/ Heavy
S-7300A Premier spec	○	DigiFlex Feed	Lock stitch (Short remaining thread)	○	○	Minimum/ Semi dry	5,000sti/min 4,500sti/min	5mm/ 7mm	○	Medium/ Heavy

NEXIO
DIGIFLEX
FEED

S-7300A

Single Needle Direct Drive Lock Stitcher with Electronic Feeding System and Thread Trimmer

- Changeable feed motion for various materials
- Reduction of disposition of thread ends (short remaining thread and bird's nest reduction)*
- Clogging at cross-over seam reduction*
- Needle breakage prevention function is adopted
- The new hook enhances sewing capability for wide range materials
- Comfortable feeding
- Reverse sound minimized
- Clean sewing without oil staining
- User-intuitive color LCD with touch panel
- Useful functions are gathered in the hand switches
- USB port is equipped

*Premier specification only

S-7250A Lock Stitch Sewing Machine



	Direct Drive	Feed	Stitch	Thread trimmer	Material thickness sensor	Lubrication type	Max. sewing speed	Max. stitch length	Needle breakage prevention function	Application
S-7250A	○	DigiFlex Feed	Lock stitch	○	—	Minimum	5,000sti/min* 4,000sti/min	5mm/ 7mm	○	Medium/ Heavy
S-7250A Premier spec	○	DigiFlex Feed	Lock stitch (Short remaining thread)	○	—	Minimum	5,000sti/min* 4,000sti/min	5mm/ 7mm	○	Medium/ Heavy

NEXIO
DIGIFLEX
FEED

S-7250A

Single Needle Direct Drive Lock Stitcher with Electronic Feeding System and Thread Trimmer

- Changeable feed motion for various materials
- Needle breakage prevention function is adopted
- The new hook enhances sewing capability for wide range materials
- Comfortable feeding
- Reverse sound minimized
- Clean sewing without oil staining
- Easy operation with a simple panel
- Useful functions are gathered in the hand switches
- USB port is equipped

*The stitch length is 2.0mm or below.

S-7190A/S-7180A S-6280A

Lock Stitch Sewing Machine



S-7190A



S-7180A



S-6280A



S-7190A



S-7180A



S-6280A

	Direct Drive	Stitch	Max. sewing speed	Max. stitch length	Needle breakage prevention function	Application
S-7190A-913P	○	Lock stitch	5,000sti/min	5mm	○	Medium
S-7190A-915P	○	Lock stitch	4,000sti/min	5mm*	○	Heavy
S-7180A-813P	○	Lock stitch	5,000sti/min	5mm	○	Medium
S-7180A-815P	○	Lock stitch	4,000sti/min	5mm*	○	Heavy
S-6280A-813	○	Lock stitch	5,000sti/min	5mm	○	Medium
S-6280A-815	○	Lock stitch	4,000sti/min	5mm	○	Heavy

*If you need 7mm specification, please contact our sales representative.

S-7190A

Single Needle Direct Drive Straight Lock Stitcher with Thread Trimmer, Electric Feeding System and Auto Foot Lifter

- Equipped the color LCD touch panel for intuitive operation
- Electric Feed System
- Short remaining thread (3.5mm)
- Auto Foot Lifter with electrical knee lifter
- Enhances the operability with new Hand Switch
- Sealed oil tank equipped

S-7180A

Single Needle Direct Drive Straight Lock Stitcher with Thread Trimmer, Electric Feeding System and Presser Foot Lifter

- Stitch length control on operation panel
- Short remaining thread (3.5mm)
- Electric Presser Foot Lifter
- Sealed oil tank equipped

S-6280A

Single Needle Direct Drive Straight Lock Stitcher with Thread Trimmer and Presser Foot Lifter

- Comfortable and High-speed Sewing
- LED Light Equipped as Standard
- User-friendly Operation Panel
- Electric Presser Foot Lifter
- High Operability with 2 Hand Switches

S-7220D

Lock Stitch Sewing Machine



	Direct Drive	Feed	Stitch	Thread trimmer	Side cutter	Lubrication type	Max. sewing speed	Max. stitch length	Needle breakage prevention function	Application
S-7220D	○	Needle feed	Lock stitch	○	—	Minimum	5,000sti/min* 4,000sti/min	4.5mm / 5.5mm	○	Medium/Heavy

*The stitch length is 2.0mm or below.

S-7220D

Single Needle Direct Drive Needle Feed Lock Stitcher with Thread Trimmer

- The needle feed mechanism prevents uneven material feeding
- Clean sewing with no oil staining
- Smooth sewing with direct drive system
- High energy saving

NEXIO

T-8421D/T-8422D/T-8722D T-8452D/T-8752D

Twin Needle Split Needle Bar Lock Stitch Sewing Machine



Lock



Split



T-8452D

	Direct Drive	Feed	Stitch	Hook	Thread trimmer	Lubrication type	Max. sewing speed	Max. stitch length	Needle breakage prevention function	Quick back device	Application
T-8421D	○	Bottom, Needle	Lock stitch	Standard	Straight	Minimum/ Semi dry	4,000sti/min 3,000sti/min	4mm	○	○	Foundation/Light, Medium/Heavy
T-8422D	○	Bottom, Needle	Lock stitch	Standard	Straight	Minimum	4,000sti/min 3,000sti/min	4mm/ 5mm	○	○	Foundation/ Light, Medium
T-8722D	○	Bottom*, Needle	Lock stitch	Double(1.8)	Straight	Minimum	3,000sti/min	7mm	○	○	Heavy/Heavy (for extra thick thread)
T-8452D	○	Bottom, Needle	Lock, Split needle bar	Standard	Straight	Minimum	3,000sti/min	5mm	○	○	Light, Medium/ Heavy/Heavy (for extra thick thread)
T-8752D	○	Bottom*, Needle	Lock, Split needle bar	Double(1.8)	Straight	Minimum	3,000sti/min	7mm	○	○	Light, Medium/ Heavy/Heavy (for extra thick thread)

*Max. stitch length is limited. *Depending on the market, the availability of thread trimming specification is different.

T-8421D

Twin Needle Direct Drive Lock Stitcher

- Direct drive/no thread trimmer type
The most suitable model for sewing of foundation garments
- Clean sewing with no oil staining

T-8422D/T-8452D

Twin Needle Direct Drive Lock Stitcher with Thread Trimmer/
Twin Needle Direct Drive Split Needle Bar Lock Stitcher with Thread Trimmer

- Stable thread trimmer operation enables high productivity
- Clean sewing with no oil staining

T-8722D/T-8752D

Twin Needle Direct Drive Stitcher with Large Hook and Thread Trimmer/
Twin Needle Direct Drive Split Needle Bar Lock Stitcher with Large Hook and Thread Trimmer

- Stable thread trimmer operation and large hook provide high productivity
- Clean sewing with no oil staining

T-8420C/T-8720C T-8450C/T-8750C

Twin Needle Split Needle Bar Lock Stitch Sewing Machine



Lock



Split



T-8420C

	Direct Drive	Feed	Stitch	Hook	Thread trimmer	Lubrication type	Max. sewing speed	Max. stitch length	Needle breakage prevention function	Quick back device	Application
T-8420C	○	Bottom, Needle	Lock stitch	Standard	Rocking	Minimum	4,000sti/min 3,000sti/min	4mm/ 5mm	—	—	Foundation/Light, Medium/Heavy
T-8720C	○	Bottom*, Needle	Lock stitch	Double(1.8)	Rocking	Minimum	3,000sti/min	7mm	—	—	Heavy
T-8450C	-	Bottom, Needle	Lock, Split needle bar	Standard	Rocking	Minimum	3,000sti/min	5mm	—	—	Light, Medium/ Heavy
T-8750C	-	Bottom*, Needle	Lock, Split needle bar	Double(1.8)	Rocking	Minimum	3,000sti/min	7mm	—	—	Heavy

*Max. stitch length is limited. *Depending on the market, the availability of thread trimming specification is different.

T-8420C

Twin Needle Lock Stitcher

- High position of arm jaw and large arm pocket make handling material easier
- Easy to replace gauge parts

T-8720C

Twin Needle Lock Stitcher with Large Hook

- High position of arm jaw and large arm pocket make handling material easier
- Easy to replace gauge parts

T-8450C

Twin Needle Split Needle Bar Lock Stitcher

- High position of arm jaw and large arm pocket make handling material easier
- Easy to replace gauge parts

T-8750C

Twin Needle Split Needle Bar Lock Stitcher with Large Hook

- High position of arm jaw and large arm pocket make handling material easier
- Easy to replace gauge parts

KE-430HX/HS Bar Tacking Machine



KE-430HX

	Direct drive	Stitch	Sewing area	Thread trimmer	Lubrication type	Max. sewing speed	Digital tension	Needle cooler	Application
KE-430HX	○	Lock	40mm x 30mm*	○ (Short remaining thread)	Semi dry	3,300sti/min	○	○	Light/Medium/ Heavy/Knitted
KE-430HS	○	Lock	40mm x 30mm*	○ (Short remaining thread)	Minimum	3,300sti/min	—	—	Light/Medium

*It can be expanded to 50x40mm as option

NEXIO

KE-430HX

Electronic Direct Drive Lockstitch Bar Tacker (Short Remaining Thread Spec.)

- Productivity improvement by world's top-class sewing speed and needle cooler
- Reduction of disposition of threads ends (short remaining thread)
- Beautiful and highly-reproducible sewing quality by digital tension
- Superior usability as everyone can use easily and reliability
- Clean sewing with semi-dry type

KE-430HS

Electronic Direct Drive Lockstitch Bar Tacker (Short Remaining Thread Spec.)

- Productivity improvement by world's top-class sewing speed
- Reduction of disposition of threads ends (short remaining thread)
- Beautiful sewing quality
- Superior usability as everyone can use easily and reliability
- Clean sewing with minimum lubrication

HE-800C Buttonhole Sewing Machine



	Direct drive	Stitch	Button hole	Thread trimmer	Max. sewing speed	Application
HE-800C	○	Lock	Straight buttonhole	○ (Short remaining thread)	4,000sti/min	Cloth/Knit

NEXIO

HE-800C

Electronic Direct Drive Lockstitch Button Holer

- High productivity with double cut
- Reduction of disposition of threads ends (short remaining thread)
- New hook enhances sewing quality
- Easy for difficult-to-sew materials with underlay

BE-438HX/HS Button Attaching Machine



BE-438HX

	Direct drive	Stitch	Sewing area	Thread trimmer	Lubrication type	Max. sewing speed	Digital tension	Application
BE-438HX	○	Lock	6,4mm x 6,4mm	○ (Short remaining thread)	Semi dry	2,800sti/min	○	Button attaching
BE-438HS	○	Lock	6,4mm x 6,4mm	○ (Short remaining thread)	Minimum	2,800sti/min	—	Button attaching

NEXIO

BE-438HX

Electronic Direct Drive Lockstitch Button Sewer (Short Remaining Thread Spec.)

- Set button smoothly
- Productivity improvement by world's top-class sewing speed
- Reduction of disposition of threads ends (short remaining thread)
- Beautiful and highly-reproducible sewing quality by digital tension
- Superior usability as everyone can use easily and reliability
- Clean sewing with semi-dry type

BE-438HS

Electronic Direct Drive Lockstitch Button Sewer (Short Remaining Thread Spec.)

- Set button smoothly
- Productivity improvement by world's top-class sewing speed
- Reduction of disposition of threads ends (short remaining thread)
- Beautiful sewing quality
- Superior usability as everyone can use easily and reliability
- Clean sewing with minimum lubrication

RH-982A Buttonhole Sewing Machine



	Direct drive	Stitch	Button hole	Thread trimmer	Max. sewing speed	Application
RH-982A	—	Double chain	Eyelet buttonhole	○	2,500sti/min	Men's/Ladies/ Casual/Jeans/Trouser

NEXIO

RH-982A

Electronic Eyelet Button Holer

- Reduce Adjustment Time
- Beautiful and High Quality Sewing
- User-Intuitive Color LCD with Touch Panel
- Sewing Capability for A Wide Range Materials

S-7780A SL-777B

Lock Stitch Sewing Machine
with Side Cutter



S-7780A



SL-777B

	Direct Drive	Feed	Stitch	Thread trimmer	Side cutter	Lubrication type	Max. sewing speed	Max. stitch length	Needle breakage prevention function	Application
S-7780A	○	DigiFlex Feed	Lock stitch	○	○	Minimum	4,500sti/min	4.0mm	○	Medium
SL-777B	○	Bottom feed	Lock stitch	—	○	Minimum	4,500sti/min	4.0mm	—	Medium

NEXIO DIGIFLEX FEED

*S-7780A Only

S-7780A

Single Needle Direct Drive Lock Stitther with Side Cutter, Electronic Feeding System and Thread Trimmer

- The side cutter cuts the material end while sewing

SL-777B

Single Needle Straight Lock Stitther with Side Cutter

- The side cutter cuts the material end while sewing

DA-927A DA-928A

Double Chain Stitch Sewing Machine



DA-928A

JC-9330 JC-9380

Blind Stitch Sewing Machine



JC-9330

	Stitch	No. of needles	Max. sewing speed	Max. stitch length	Application
DA-927A	Double chain stitch	2	4,000sti/min	3.0mm/3.5mm	Light/Medium
DA-928A	Double chain stitch	2/3	4,000sti/min	4.2mm	Heavy/Extra heavy

	Stitch	Stitch length	Max. sewing speed	Application
JC-9330	Single-chain blind stitch	3.2mm - 8.5mm	3,000sti/min	Light/Medium/Heavy
JC-9380	Single-chain blind stitch	3.2mm - 8.5mm	3,000sti/min	Light/Medium/Heavy

DA-927A

Twin Needle Feed Off the Arm Double Chain Stitcher

- Sew attractive balloon stitches onto thin materials without puckering

DA-928A

Twin Needle/Three Needle Feed Off the Arm Double Chain Stitcher

- A tractor-type presser foot can be used to easily ride over thick sections

JC-9330

Blind Stitcher

- One-touch switching between loose and tight seams

JC-9380

Blind Stitcher with Differential Feed Mechanism

- The differential feed enables smooth feeding with no gathering

Z-8550B Z-8560B

Zigzag Lock Stitch Sewing Machine



Z-8560B

	Direct drive	Feed	Stitch	Thread trimmer	Lubrication type	Max. sewing speed	Application
Z-8550B	○	Bottom feed	Zigzag	—	Semi dry	5,000sti/min	Light/Medium
Z-8560B	○	Bottom feed	Zigzag	○	Semi dry	5,000sti/min	Light/Medium

NEXIO

Z-8550B

Electronic Direct Drive Zigzag Lock Stitther

- Clean sewing with no oil staining
- High energy saving
- Wide-variety pattern sewing is available

Z-8560B

Electronic Direct Drive Zigzag Lock Stitther with Thread Trimmer

- The compact knife mechanism in a single unit enables simple maintenance
- Clean sewing with no oil staining
- High energy saving
- Wide-variety pattern sewing is available

FB-N21A

High Speed Overlock Sewing Machine

FB-N31A

High Speed Safety Stitch Sewing Machine



FB-N21A

	Max. speed	No. of needles	No. of threads	Needle space	Overedge with	Stitch length	Diff. feed ratio	Needles	Application
N21A-W020	6,500sti/min	2	4	2mm	4mm	5mm	0.7-1.5mm	DCx27 #11	Light/Medium
N31A-5030	6,000sti/min	2	5	5mm	5mm	0.7-4.0mm	0.7-1.5mm	DCx27 #14	Medium/Heavy
N31A-5050	5,500sti/min	2	5	5mm	6mm	1.0-4.6mm	0.8-1.4mm	DCx27 #19	Heavy
N31A-5060	5,500sti/min	2	5	5mm	6mm	1.0-4.6mm	0.8-1.4mm	DCx27 #19	Extra Heavy
N31A-6030	6,000sti/min	3	6	5mm	2+4mm	0.7-4.0mm	0.7-1.5mm	DCx27 #11	Medium/Heavy

FB-N21A

High Speed Overlock Sewing Machine

- Electric Presser Foot Lifter
- Automatic Tape Cutter
- Built-in Direct Drive Motor
- Lint Collector (Option)

FB-N31A

High Speed Safety Stitch Sewing Machine

- Electric Presser Foot Lifter
- Automatic Tape Cutter
- Built-in Direct Drive Motor
- Lint Collector (Option)

BAS-H Series

BAS-311HX/BAS-326HX/
BAS-326H-484•484SF

Programmable Electronic Pattern Sewing Machine



NEXIO

BAS-J Series

BAS-341JX/BAS-342JX

Programmable Electronic Pattern Sewing Machine



NEXIO



BAS-311HX



BAS-342JX



BAS-326H-484



BAS-326HX

BAS-J Series

Direct Drive Programmable
Electronic Pattern Sewer with
Cylinder Bed
BAS-341JX/ BAS-342JX/

- Attractive sewing accurate to the sewing data
- High stiffness feed mechanism
- High productivity with max. sewing speed of 2,800sti/min
- Best User Experience with LCD Touch Panel
- Skip Stitch Prevention
- Fabric thickness detection
- Skipped stitch/Thread breakage detection

	Feed	Hook	Sewing Area	Machine head	Max. sewing speed	Max. stitch length	Air consumption	Fabric thickness detection	Skipped stitch/Thread breakage detection	Application
BAS-341JX	Intermittent (pulse motor)	Double capacity hook	250mm x 160mm	Arm bed	2,800sti/min	0.05-20.0mm	1.8l/min	○	○	Heavy/Airbags
BAS-342JX	Intermittent (pulse motor)	Double capacity hook	300mm x 200mm	Arm bed	2,800sti/min	0.05-20.0mm	1.8l/min	○	○	Heavy/Airbags

	Feed	Hook	Sewing Area	Machine head	Max. sewing speed	Max. stitch length	Air consumption	Fabric thickness detection	Skipped stitch/Thread breakage detection	Application
BAS-311HX	Intermittent (pulse motor)	Double capacity hook	150mm x 100mm	Arm bed	2,800sti/min	0.05-12.7mm	1.8l/min	—	—	Medium/Heavy
BAS-311HN-07A	Intermittent (pulse motor)	Double capacity hook	150mm x 100mm	Arm bed	2,800sti/min	0.05-12.7mm	1.8l/min	—	—	Seat belt
BAS-326HX	Intermittent (pulse motor)	Double capacity hook	220mm x 100mm	Arm bed	2,800sti/min	0.05-12.7mm	1.8l/min	—	—	Medium/Heavy
BAS-326H-07A	Intermittent (pulse motor)	Double capacity hook	220mm x 100mm	Arm bed	2,800sti/min	0.05-12.7mm	1.8l/min	—	—	Seat belt
BAS-326H-484/484SF	Intermittent (pulse motor)	Double capacity hook	220mm x 100mm	Arm bed	2,800sti/min	0.05-12.7mm	1.8l/min	—	—	Heavy/Seat belt

BAS-H Series

Direct Drive Programmable
Electronic Pattern Sewer with
Cylinder Bed

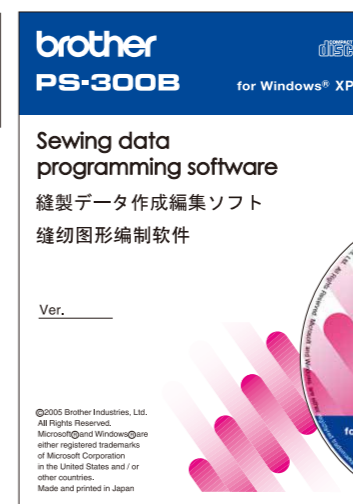
BAS-311HX/BAS-326HX

- Attractive sewing accurate to the sewing data
- High stiffness feed mechanism
- High productivity with max. sewing speed of 2,800sti/min
- Large screen LCD touch panel with programming functions

BAS-326H-484/484SF

- Treble hook equipped, reducing the frequency of bobbin changes
- Accurate and stout sewing

PS-300B Software



PS-300B

Sewing Data Programming
Software

- Your original sewing patterns can be created enhancing the product's value
- Sewing pattern data can easily be modified. It reduces the time for resizing and correcting
- Sewing pattern data for existing models and external data can also be used. Main function : Creating, editing, setting and converting of sewing data File input/output,data

BAS-H Series

**BAS-360H/BAS-365H/
BAS-370H/BAS-375H**

Bridge Type Programmable
Electronic Pattern Sewing Machine



NEXIO



BAS-375H



BAS-370H



BAS-365H



BAS-360H

BAS-H Series

Bridge Type Programmable
Electronic Pattern Sewer
BAS-360H/BAS-365H/
BAS-370H/BAS-375H

- Improved productivity, superior quality, a space saving design, and a large sewing area
- Productivity improvement by IoT
- New digital tension allows for a wide variety of threads to be sewn
- User-friendly color LCD with touch panel display
- For use with various types of sewing applications such as shoes, airbags, car sheet, etc.

	Feed	Hook	Sewing Area	Machine head	Max. sewing speed	Max. stitch length	Air consumption	Digital tension	Needle cooler	Application
BAS-360H	Intermittent (pulse motor)	Double capacity hook	500mm x 400mm	Bridge	2,700sti/min	0.05mm-20.0mm	8l/min*	○	○	Heavy/Shoes/Bag
BAS-365H	Intermittent (pulse motor)	Double capacity hook	700mm x 400mm	Bridge	2,700sti/min	0.05mm-20.0mm	8l/min*	○	○	Heavy/Shoes/Bag
BAS-370H	Intermittent (pulse motor)	Double capacity hook	700mm x 700mm	Bridge	2,500sti/min	0.05mm-20.0mm	8l/min*	○	○	Heavy/Shoes/Bag/Airbags/Car sheet
BAS-375H	Intermittent (pulse motor)	Double capacity hook	1200mm x 700mm	Bridge	2,500sti/min	0.05mm-20.0mm	8l/min*	○	○	Heavy/Shoes/Bag/Airbags/Car sheet

*When needle cooler turns on

UF-8910

Single Needle Direct Drive Flat-bed
Unison-feed Stitcher with Thread Trimmer



NEXIO

UF-8920

Twin Needle Direct Drive Flat-bed
Unison-feed Stitcher with Thread Trimmer



Large fabric is easy to handle thanks to its wide arm pocket

Wide arm pocket and digitalized management are standard. This is the new global standard of Brother's unison-feed sewing machine. Display panel screen and push buttons can be customized to the customer's needs for user-friendly operation.



Digitalized numeric control for Enhanced Sewing Reproducibility

Thread tension, alternative presser foot movement, presser bar pressure, feed pitch, and sewing speed are electronically controlled and can now be set or adjusted digitally.



Multi-Functional Switches for Improved Operability

Each of the three switches can be assigned to a selected function.



UF-8910

Single Needle Direct Drive Flat-bed Unison-feed Stitcher with Thread Trimmer

- Large fabric is easy to handle thanks to its wide arm pocket
- Digitalized numeric control for Enhanced Sewing Reproducibility
- Color LCD touch panel can be customized to suit your needs
- Multi-Functional Switches for Improved Operability

UF-8920

Twin Needle Direct Drive Flat-bed Unison-feed Stitcher with Thread Trimmer

- Large fabric is easy to handle thanks to its wide arm pocket
- Digitalized numeric control for Enhanced Sewing Reproducibility
- Color LCD touch panel can be customized to suit your needs
- Multi-Functional Switches for Improved Operability

	Direct drive	Max. presser foot height	Max. sewing speed	Max. stitch length	Arm pocket size	Skip-stitch detection device	Bobbin winder	Needle
UF-8910	○	20mm	3,800sti/min	9mm	400mm	○*	○*	134x35 Nm130 (#21) Nm90~180 (#14~#24)
UF-8920	○	20mm	3,400sti/min	9mm	400mm	-	○*	134x35 Nm160 (#23) Nm90~180 (#14~#24)

*Depends on specification