

## Brother Continues to Drive a New Era of Product Excellence and Industry Change

Since its inception in 1908, Brother has been at the forefront of product innovation, dedicated to delivering superior and innovative sewing technology to our customers. While these innovative changes have now become the industry standard, our never-ending spirit of challenge and innovation inherited from our ancestors have helped us surmount many challenges in the marketplace and continue striving for product excellence.

It is with this spirit of pride and dedication that we introduce our new line of NEXIO industrial sewing machines. This new line of NEXIO industrial sewing machines boasts a new feeding mechanism and striking new housing that will set a new design standard in the industry. This new brand name is derived from the words “Next” and “Society,” combining our vision to drive a new era of industry change with continual dedication to innovative product development, as well as our continued company commitment to forging strong customer relationships by being “At your side.”

### Specifications/

UF-8910-00	0	0	0	UF-8910-000 Standard
UF-8910-001	1	0	0	UF-8910-001 Deluxe
UF-8910-101	1	0	1	UF-8910-101 Premium
UF-8920-001	1	1	1	UF-8920-001 Deluxe

	UF-8910	UF-8920
Stitch	Single needle unison feed	Twin needle unison feed fixed needle bar
Max. sewing speed	3,800st/min	3,400st/min
Max. back tacking speed		2,000st/min
Max. stitch length		9mm
Max. presser foot height		20mm
Max. walking foot stroke		9mm
Presser bar pressure		75~120N
Needle thread tension		0.7~7.0N*1
Arm pocket size		400mm
Hook size		28mm
Min. Needle gauge	-	3mm
Max. needle gauge	-	35mm
Needle bar stroke		40mm
Needle	134×35 Nm130 (#21) Nm90~180 (#14~#24)	134×35 Nm160 (#23) Nm90~180 (#14~#24)
LED light	Hand light and arm pocket light are standard equipment	
Max. number of programs	15 programs (Up to 20 seams)	
Weight	Machine head	75kg
	Control box	10.5kg
Motor	AC servo motor	
Power	1-phase, 3-phase: 200V-240V 660VA	

\*1 Varies depending on the thread.

Option/  
Back tack lever\*  
Slide plate sensor set  
SC6901001 SLIDE PLATE SENSOR SET S (For single needle)  
SC6902001 SLIDE PLATE SENSOR SET T (For twin needle)  
\*For more information, please contact your dealer.



Brother GT/ISM Support App



### RoHS Compliant

UF-8910 / UF-8920 is compliant with the RoHS Directive (the restriction of the use of certain hazardous substances in electrical and electronic equipment) which came into effect in the EU in July 2006.



Brother has established voluntary environmental standards for products and created the "Brother Green Label". UF-8910 / UF-8920 is certified as an environment-conscious sewing machine according to the "Brother Green Label" standard.



Working with you for a better environment  
www.brotherearth.com

CHINA	BROTHER MACHINERY SHANGHAI LTD.	https://www.brother.cn/	+86-21-3135-3355
ASIA	BROTHER MACHINERY (ASIA) LTD.	https://www.brother.com.hk/	+852-2777-0010
EUROPE AFRICA, MIDDLE EAST	BROTHER INTERNATIONALE INDUSTRIEMASCHINEN GmbH	https://www.brother-ism.com/	+49-2822-6090
AMERICAS	BROTHER INTERNATIONAL CORPORATION	https://www.brother-usa.com/	+1-908-704-1700



BROTHER INDUSTRIES, LTD.  
1-5, Kitajizoyama, Noda-cho, Kariya-shi, Aichi 448-0803, Japan.  
Phone: 81-566-95-0088 Fax: 81-566-25-3721 https://industrialsewingmachine.global.brother/

2022.12/121776Z Vol.4

# UF-8910

Single Needle Direct Drive Flat-bed Unison-feed Stitcher with Thread Trimmer

# UF-8920

Twin Needle Direct Drive Flat-bed Unison-feed Stitcher with Thread Trimmer

Wide arm pocket and digitalized management are standard.

This is the new global standard of Brother's unison-feed sewing machine. Display panel screen and push buttons can be customized to the customer's needs for user-friendly operation.

- Large fabric is easy to handle thanks to its wide arm pocket
- Digitalized numeric control for Enhanced Sewing Reproducibility
- Color LCD touch panel can be customized to suit your needs

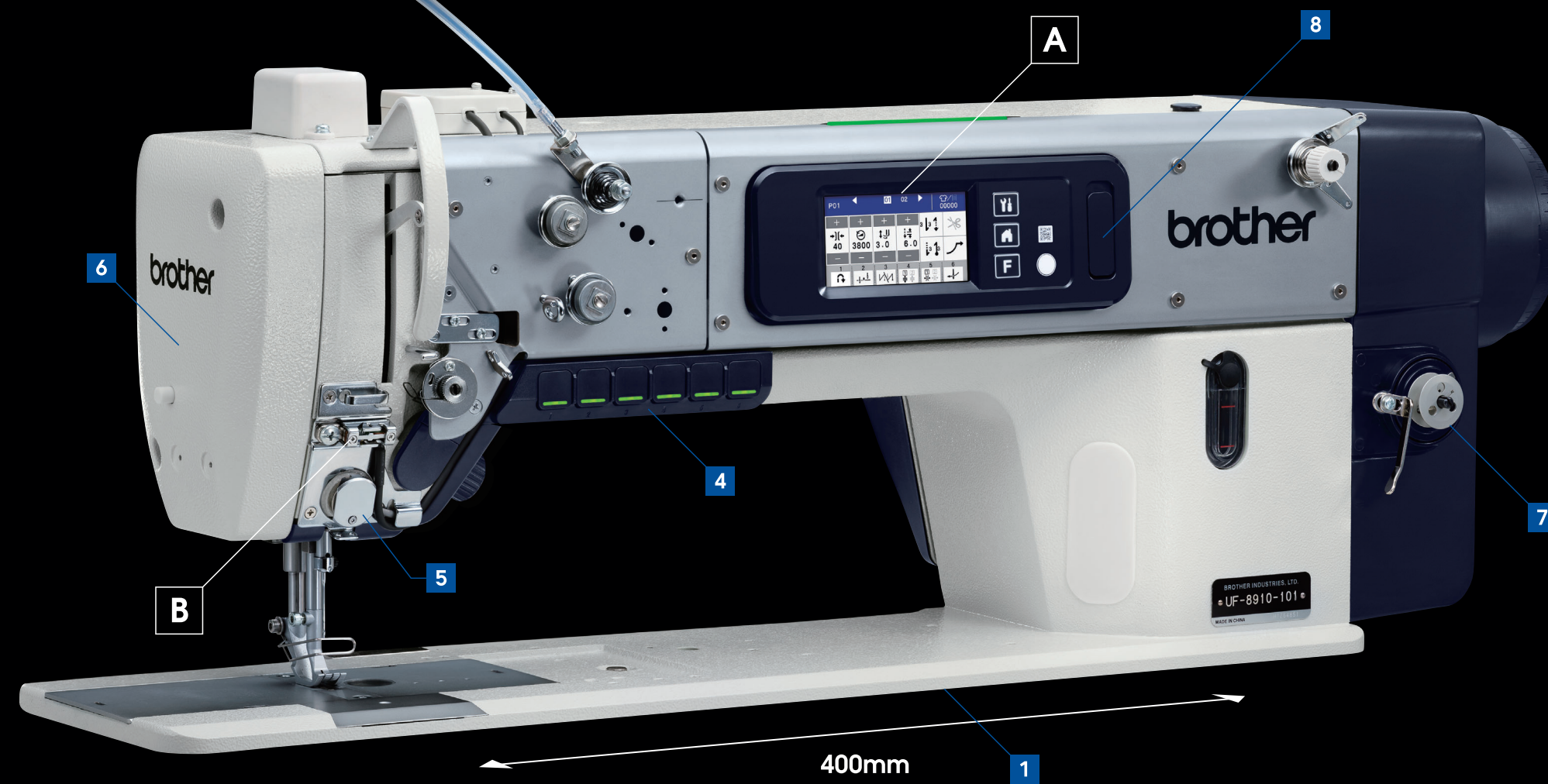


# NEXIO

# NEXIO

# New Global Standard

Wide arm pocket and digitalized management are standard. This is the new global standard of Brother's unison-feed sewing machine. Display panel screen and push buttons can be customized to the customer's needs for user-friendly operation.



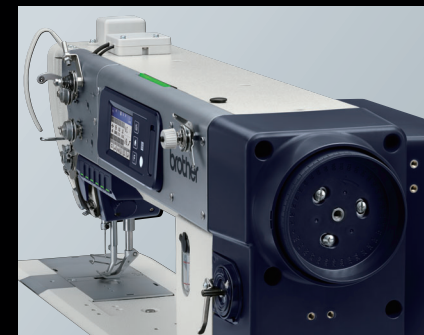
## 1 Large Fabric Is Easy to Handle Due to Its Wide Arm Pocket

The 400mm wide arm pocket can easily handle large fabrics without stress. In addition to the LED light at the base of the needle bar, a highly illuminated LED light is also located at the foot of the needle to help improve the operator's work efficiency.



## 2 Digitalized Numeric Control for Enhanced Sewing Reproducibility

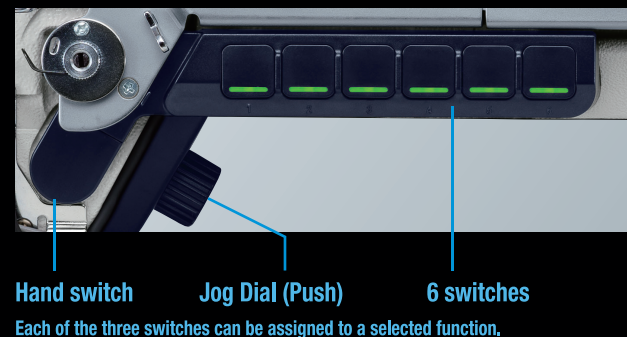
Thread tension, alternative presser foot movement, presser bar pressure, feed pitch, and sewing speed are electronically controlled and can now be set or adjusted digitally.



## 3 Color LCD Touch Panel Can Be Customized to Suit Your Needs

Two home screens can be selected for each application. It is also possible to customize the 6 available switches and see the current setting. In addition, it has a lock function for various settings to prevent operator changes and errors from occurring. (Refer to [A].)

## 4 Multi-Functional Switches for Improved Operability



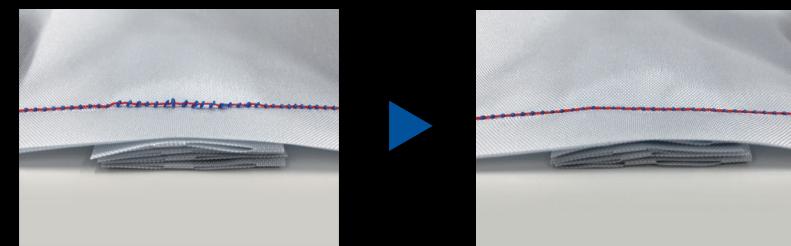
Hand switch Jog Dial (Push) 6 switches  
Each of the three switches can be assigned to a selected function.

## 5 Upper Thread Presser Is Standard Equipment

The upper thread presser can be set to hold the upper thread at the beginning of sewing.

## 6 Pressor-Foot Height Sensor Prevent Work Errors and Optimizes Sewing Parameters During Sewing

This feature measures the height of pressor-foot at the beginning of sewing and it stops with the error if the height was out of specific range. During sewing, the machine detects height changes and automatically changes the thread tension, alternating presser foot movement, pressor-foot pressure, and sewing speed.



## 7 Equipped with the Electric Bobbin Winder

The bobbin winder is equipped with the electric motor, which makes it possible to wind thread even when the machine is stopped. In addition, the constant winding speed stabilizes the thread tension, which leads to improved sewing quality. Bobbins are available in both slotted and non-slotted types. \*Except for specification code -000

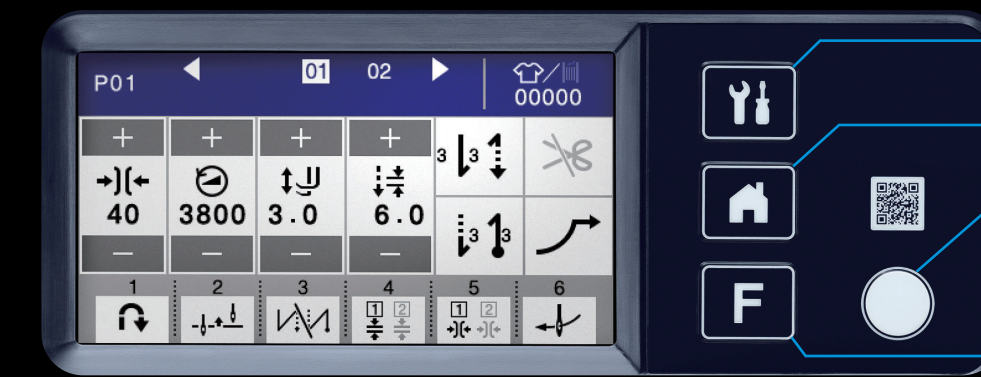


## 8 More Comfortable with Connectivity Equipped with two USB ports

It is possible to easily copy sewing data and adjustment values between sewing machines using a USB memory device. Software upgrades can also be done easily. The USB port on the control box is also capable of power supply (5V/2A).

A

## Color LCD Touch Panel



Setting key: Moves to the setting screen.  
Home key: Moves to the home screen.  
Hold key: Stops the motor of the sewing machine. Sewing machine will not operate by depressing foot pedal.  
Function key: Set shortcuts for functions.

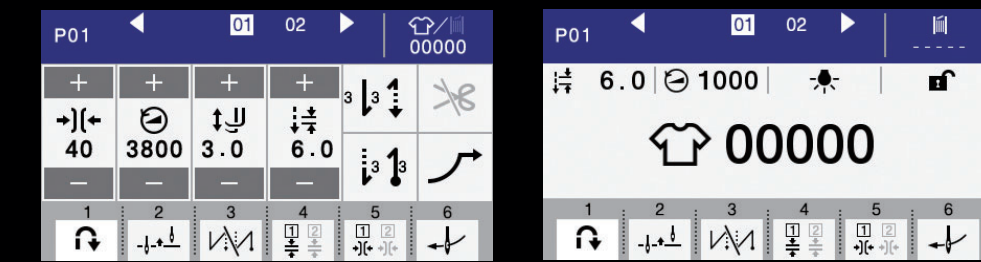
## Status LED

Three color LEDs allow you to check the status of the sewing machine.



## Home Screen

It can be selected according to your requirements.



Detail home screen

Easy home screen

## Protect Settings

A Lock out function can be enabled and prevents changes to preset values for sewing. This allows for stable sewing at a predetermined setting value.

## Program Creation

Maximum of 15 programs can be created and each program can have up to 20 steps. Programs and steps can be assigned any description preferred to prevent selection errors.

## Display QR Code

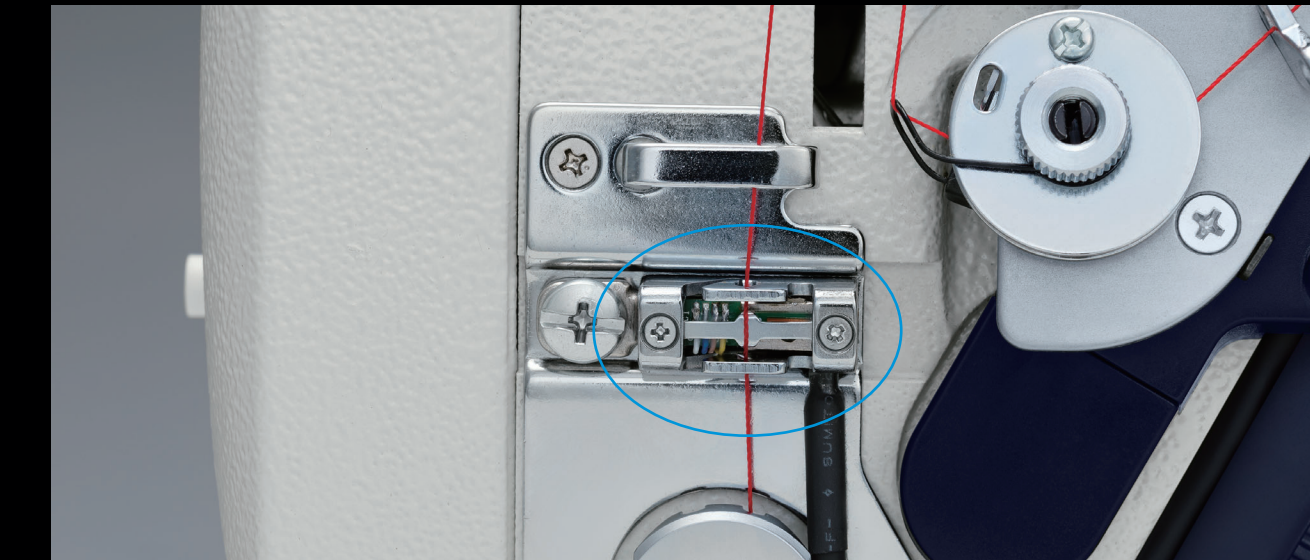
QR codes are displayed in case of errors, so that the latest information can be checked on your mobile phone or tablet.

B

## Skip-Stitch Detection Device (Brother Only)

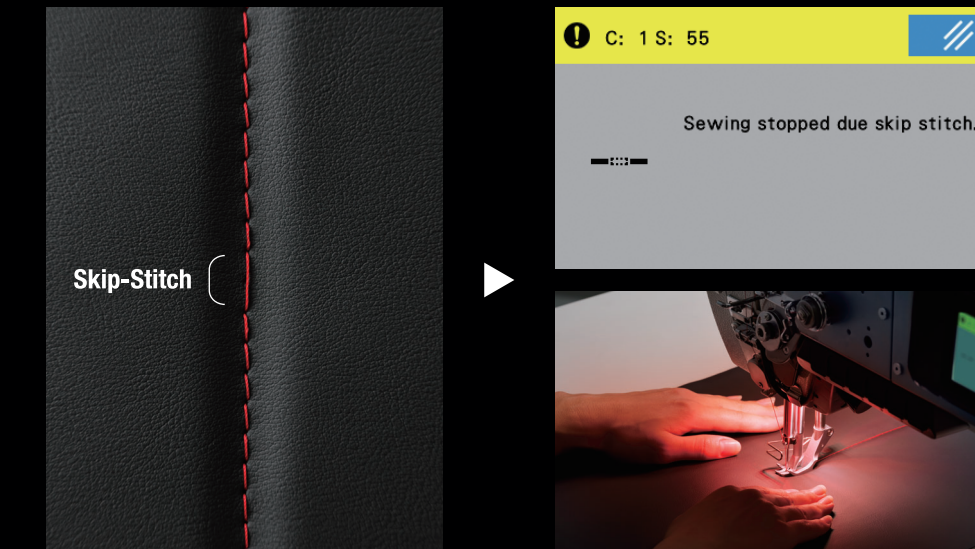
※Equipped as standard for specification code 101.

Thanks to Brother's newly developed unique algorithm, it detects skip-stitch stably with higher accuracy while managing less possibility of false detection caused by such as dust and/or lint. (Patent applied)

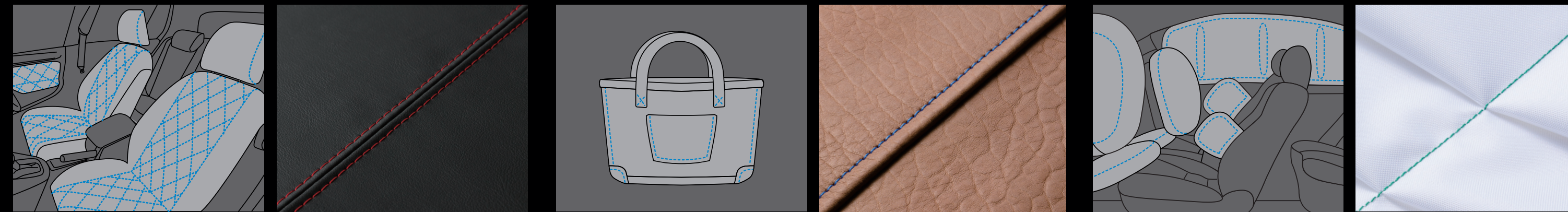


## Error Detection

If an error is detected, a red handheld LED will notify the operator. After error detection, the panel displays the location (number of stitches) where the error occurred.



## Sewing Applications Example



Automobile interior

Bags

Airbags